

Inside

President's Corner
Tautuku AGM
Fishing Quotes
Upcoming Competitions
Letters to the Editor
Feature Articles
& more!

'El Presidente'

David Haynes fights for
our right to fresh water
and protection of the fish
within...

Page 3

PNG Pursuits

Nick Thomson recounts a
fishing experience off the
coast of Papua New
Guinea...

Page 4

Tastebud Treats

Foraging can be a great
option to get out and
about, when not fishing
of course...

Page 5

New Boy on the Block

Bruce Reid reports on the
recent goings on with the
NZRFC...

Page 7



Pete's Big Fishing Day in Twizel!

Recently Pete Everitt & his wife Dianne, went to Twizel to visit family and of course went fishing. Having tried at various spots on the canals without much success; they decided to fish a secret spot only know to themselves (yep - "along with hundreds of other people"). After some time Pete hooked a fish and not realising the size of his catch, called to Dianne for the net.

Once it surfaced and started heading down the canal, Pete had a battle on his hands to turn it around and bring it in closer. After some time battling with this Jack Trout, though the net was ready, it was realised that the net was far too small for this 24lb monster.

Pete managed to get it close to shore and noticed the hook had been straightened out and was coming out of its mouth. Pete's reaction was quick in grabbing the Trout in both hands and successfully landed his catch.

The fish was in very good condition (as the photo shows), and not having previously caught anything as big as this before, decided to keep it - a family trophy !

'Nice One Pete!'



President's CORNER

Hi,

Celebrations are in FULL SWING in Salmon City – Oops – Shield City !

We as fishers of our harbour and coastal areas are looking to celebrations for a constructive outcome to our coastal Paua Issue. Allen Frazer and his MPI team held a well organised meeting between Commercial Paua Industry operators, Recreational Paua Divers, Iwi representatives from Bluff to Otago, New Zealand Recreational Fishing Council and a representation of local recreational fishers and fishing clubs.

A consensus from this meeting was for more scientific data from these PAU 5D areas before 'opening' up these recreational fishing grounds to commercial interests. As the Commercial Paua Industry operators that attended stated, once we have this scientific evidence a management plan can then be put in place. We can't go by 'gut' feeling through years of Paua experience. We have to draw-up a shared plan with the scientific evidence collected over the next year or two. We now know that this is "not a numbers game" – 2,718 status quo submissions verses 22 submissions in favour of opening up the closed commercial areas. As MPI stated at the meeting: it's the 'substance' of the submissions. Agreed – lets now get the 'substance' or scientific data required.

Let's not pressure our unique ecosystem that Dunedin and our Otago/Southland coastline provide for our community for today's economic gains. Lets work on a PLAN incorporating Recreational Fishers, Iwi, and Commercial Fishers so that our future Generations can benefit! Establish a shared management approach in moving ahead. We must get this right or we will be like many other Paua locations throughout New Zealand where the number of large paua have declined. We hope from the next

meeting that a planned agreed solution is put on paper for the Minister to make his decision on.

AGM time – Sunday 22nd September 2013 @ 3.00pm. I'm asking you all to consider your contribution to our fine club in taking on an active roll on the committee. Finger food is provided and Speights @ \$5/jug & quart bottles!! Time for you to enjoy.

We have the long awaited Patron and Life Member boards erected – completing the club history. Any Fishing memorabilia that members wish to donate to our Club would be gratefully appreciated.

Your Club will be represented at the NZSFC 57th AGM this year being held by the Counties Sports Fishing Club, Pukekohe, on 27th & 28th September.

News from the Dunedin Community Salmon Trust – over 200,000 salmon fry will be transferred to the hatchery tanks, starting Saturday 31st August. Any interest here – please phone me on (03) 455 7592.

The recent America's Cup races are an astounding spectacle! We may have a new 'knight' in the making if Dean Barker makes this America's Cup; our Cup again. Enjoy the races between your fishing time on our rivers, lake and coastal waters.

Cheers,
Brett



'FRESH WATER NEWS & VIEWS' FROM THE NZFFA

'EL PRESIDENTE'!

Greetings,

Despite being a freshwater fisheries based organisation, the NZ Federation of Freshwater Anglers members' time has been occupied with the ongoing SNA1 saga, as we all love fishing in all its wondrous forms. Legasea & NZRFC, amongst many organisations, are putting up a compelling campaign and have set the media alight, so a huge congratulations from the Federation.

On our home front we are fighting the Ruataniwha dam scheme, alongside Napier Freshwater Anglers Club, Fish and Game, Anton Oliver and a host of other good buggers. Hawkes Bay Regional Council and our beloved leaders are keen as mustard to spend other people's money (our taxes and rates) on a scheme to exchange as much cut price water as they can take and sell from the river in return for effluent and nutrients. Only a fish with suicidal tendencies, and the MPI, could support such stupidity.

Although I have only been President for four months; it has quickly become apparent that our fight is to stop what is supposed to be ours from being taken - namely fresh water. Theoretically it belongs to "everyone and no-one" legally, by government and primary industry. On the plus side we welcome two new member organisations: The Manic Tackle Project and the Fishing and Outdoors newspaper, as well as receiving increasing membership from as far away as the UK and Canada. Plus, we have our facebook page up and to have a look and "like" us otherwise we will suffer grave insecurities: www.facebook.com/NZFFA.

Tight lines to you all.

David Haynes
President New Zealand
Federation of Freshwater Anglers

www.nzffa.net - Phone: 03 546 6051
Email: david@solumconsulting.co.nz



Wedderburn
SINCE 1894

Weighing | Labelling | POS | Food Processing

The intelligent choice for:

- Weighing solutions
- Label manufacturing
- POS systems
- Printers and labelling equipment
- Paperless traceability systems
- Food processing equipment
- Temperature equipment
- Technical support



Branches Nationwide 0800 800-379
enquiries@wedderburn.co.nz www.wedderburn.co.nz

fishing NEW ZEALAND
news



Long lines at Loupomu



“Let’s go fishing” takes on a slightly different meaning when it is pronounced, “Gea orebe maisesai”. We were on Loupomu, one of the three inhabited islands in Amazon Bay, SE Papua New Guinea, and I had been invited to join half a dozen men on a fishing expedition to the outer reef. Each Island had its own reef, but there was also a long reef 15 Km out, running more or less parallel to the coast.

We tacked out to it on the orou, a vessel constructed from two hollowed out logs – one about 14 metres long and the other a couple of metres less, connected by a three metre wide deck. In the centre of the larger log a six metre mast was housed, from which hung a rectangular canvas sail kept out by a gaff stretching from the inner, lower point to the outer, upper one with appropriate rigging. It was steered by the use of a big, wide paddle. When it ‘came about’ the steering paddle was drawn up and a similar one put down at the other end while the sail was brought around to catch the trade wind and send us on the other tack.

Once we got to the reef we tacked up and down, trolling three lines with wire traces and 10cm hooks made into lures by binding on short lengths of the white inner leaf of a banana palm. This apparently resembles a 15

to 20cm fish in the water.

The first catch was a metre long mackerel, which was a little smaller than most we caught that day, with a couple of other local varieties thrown in. It was soon gutted and cut up, to be put into a pot of sea water set on three long stones standing up from an iron tray filled with clay, and a fire coaxed out of the embers that had been brought along with sticks for fuel.

Well, fishing can be hungry work!

But there are also other ways of fishing. In their gardens the people grow a vine, the roots of which contain what we call derris. These roots can be bruised well and thrown into pools left on the reef by the ebbing tide, and the released toxin can bring fish belly-up. The inland people dam the streams and use it too.



But ordinary handlines are also used by some men who specialise in fishing solo from their wa’ona, or outrigger canoes.

One such man was Dauoi, for whom fishing was a means of livelihood, as a dropped foot made walking tedious. In the sixties we would buy fish from him for 1/- (later 10c) a pound. One day we saw him limping up from the beach with what turned out to be a canoe paddle over his shoulder. From it was suspended a nunugeru with pliable bark threaded through its gills; his ten year old son was struggling to hold up his end of the paddle. Dauoi earned \$7.00 for that fish! And many people on the mission station had fish for tea that night.

I still marvel at his ability to land this monster from his five metre wa’ona – the cuts on his hands and up his forearms from the nylon line proved that he had had a good battle.

Nick Thomson

WHITEBAIT FRENZY

The lower Clutha River is a productive place to fish where there is a few 'bait around

Whitebaiters and trouters go into a similar frenzy at this time of the year – both tearing about purposefully in pursuit of that translucent delicacy. And because the spring brings with it a rush of prey items like whitebait into the lower end of Otago rivers, it makes sense that predators accumulate to take advantage of them. This also makes it a productive time to dust off the trout fishing gear and a set of tide charts.

Whitebait are typically head upriver on an incoming tide so fishing at this time will be the most successful. During the hours of darkness whitebait tend to travel closer to the edges – irrespective of tide – and that can make them easy targets for sea run trout and put them within reach of shore anglers. If you time it right, splashy and aggressively feeding fish will be spotted well before you have your gear set up.

Silvery lures or streamer flies such as grey ghosts or the old fashioned rabbit fly all work well and the most popular spots are the lower Taieri and lower Clutha Rivers. The Taieri is fishing very well already.

Image: Jack with Clutha fish



Win on Wetlands

Enhancement of the Fish & Game Council owned Takitakitoa wetland closer to plan change

The Environment Court has signed off on Otago Fish and Game Council's appeal on the Otago Regional Council's new wetland plan. This has avoided an Environment Court hearing and through a co-operative effort with the other parties the rules and regulations for protecting and enhancing wetlands across Otago have been significantly improved.

The Water Plan now considers that both introduced and indigenous game birds are a value of wetlands and makes a new easier rule for anyone wishing to raise the water level in a wetland for enhancement.

Furthermore, the stalled Takitakitoa wetland enhancement project on the Lower Taieri now has an easier road to approval.

Otago Fish and Game thanks the ORC for coming up with workable solutions and avoiding a Court hearing.



Image: Takitakitoa



New Zealand Masters Games 2014

Launch Speech by John Bezett, Games Chairman & Dunedin City Councillor.

Welcome to the launch of our Dunedin Games – The 2014 Southern Trust NZ Masters Games.

The preparation of these games began at the conclusion of the last event in 2012 and work has been underway since then to ensure we provide a platform to deliver an event that we believe will surpass previous successful Games.

New is the underlying theme for these games – our 25th Masters Games. A new games manager, Vicki Kestilla – a new naming right sponsor (The Southern Trust) – new games ambassadors (Tony Gilbert, Rugby Coach and Olympic athletes, Lisa & Nina Daniels) and introducing new and exciting sporting options a choice of more than 70 events!

The NZ Masters Games is a multi-sport event providing an opportunity for mature sports people to participate in one of the largest recreation events in Australasia. Fun – Friendship – Participation – exercise and a healthy lifestyle. These are key components of the NZ Masters Games. The NZ Masters Games have recently undertaken a strategic planning process to identify a development plan that will – increase the profile of the NZ Masters Games brand – increase the reach of the NZ Masters Games profile – enhance the quantity and quality of sports codes partnered NZ Masters Games and prepare the Games and partners to hold the 2017 World Masters Games, where we expect to have in excess of 25,000 participants.

Our Games Village this Year will be returning to the popular Otago University Campus – a venue well suited to riotous unruly behaviour. The difference being Masters Games revellers are usually in bed by midnight, and those that aren't, tend to be quite harmless!!

There are many facets to organising an event of this magnitude and three groups that I really do have to mention and thank, are (ONE), our sponsors. This was always going to be a difficult year for funding because of the global recession, but we are delighted and appreciative of the support we have had from the Dunedin Business Community. (Two), our volunteers. A critical element to a successful games and (Three), our sport coordinators. Without your continuing level of support; quite frankly, the games could not be held – THANKS to you ALL!

Finally my thanks to my colleagues on the Games Trust – Ron Esplin, Ron Mackersay, Geoff Plunket, Hamish Saxton, John Brimble, Ron Polenski & Sue Bidrose.


John Bezett.



New Zealand Masters Games Staff : Fiona Pickering (Registration Coordinator), Vicki Kestila (General Manager), Geoff Simons (Sports Liaison) & Katie Whelan (Event Coordinator).

Footnote: Fishing – Salt Water, commences Sunday 2nd February 2014. Separate Events for Men & Women covering, Salmon (Boat & Land), Barracoutta, Shark, Groper, Blue Cod, & Trumpeter Fishing. Weigh in @ the Tautuku Fishing Club, Smaills Beach, Tomahawk, Dunedin. Sports Fee \$35.

FORAGING FOR YOUR DINNER



'Get out and about and treat your tastebuds'

Those of us who live in or around Dunedin know it's a special place; a vibrant community with world-class scenery and fishing to match. But when the tides are low, it's time to forage for great ingredients that can be easily found around our coastline.

Cockles can be sourced from a number of locations, remember to stick to the quota to ensure we can all continue to enjoy these little beauties infinitely. Same goes for the wonderful mussel. For those in the know, there are a good few locations where you can harvest both almost side by side. Soak overnight in fresh water before cooking.

Now for greenery:

1. Stinging Nettle has a great bitter peppery flavour - use for soup or sauce. Handle carefully, should be cooked before eating.

2. Sea Spinach is crisp, salty and delicate - cook briefly and perhaps add to a risotto or mix through your cockles and mussels.



3. Horopito (NZ pepper tree) is great for adding flavour when smoking meats or use as a base note for stews or soups much like bay leaves.

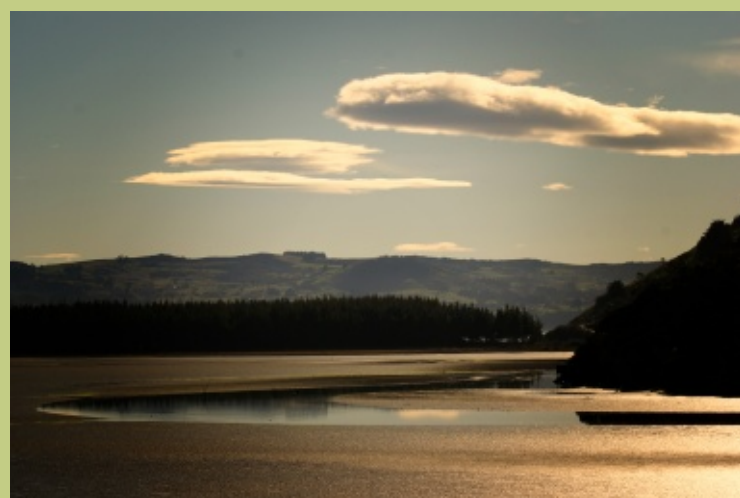
4. Onion Weed can be used for flavour as you would spring onions or garlic - the base of plants are best.

5. Parsley - don't pay five bucks for a droopy bunch from the supermarket. Flat leaf parsley grows well around our coast and is great for garnish and soups. It also has a stronger flavour than store brought.

Remember:

Don't forage anything you're unsure of. There are many resources in libraries and online to help identify edible local plants so use those to be sure.

Get creative in the kitchen!



Tautuku Fishing Club Dunedin & Haast Inc.

Annual General Meeting.

Sunday 22nd September 2013 @ 3.00pm

Supper provided.

Welcome to all Club Members.



Pacific Bluefin Tuna caught by Chinese TV Crew

by Lance Goodhew of Encounter Fishing



Hi all ,well the big boys have finally turned up on the west coast. With a keen group of Chinese fishers armed with there own camera man for Chinese TV and heavy stand up gear to do battle with the giant Bluefin, the boys got more than what they bargained for with the first fish ripping them off there feet and around the cockpit like rag doles, took the best part of 2hrs to bring the first one to the boat and when pulled aboard taped out at a massive 285kg first fish for the season and what a stunner, three hours later the next was hooked and brought to the boat in very short time (that is for Bluefin) of 50mins, the fish was released est 250kg.

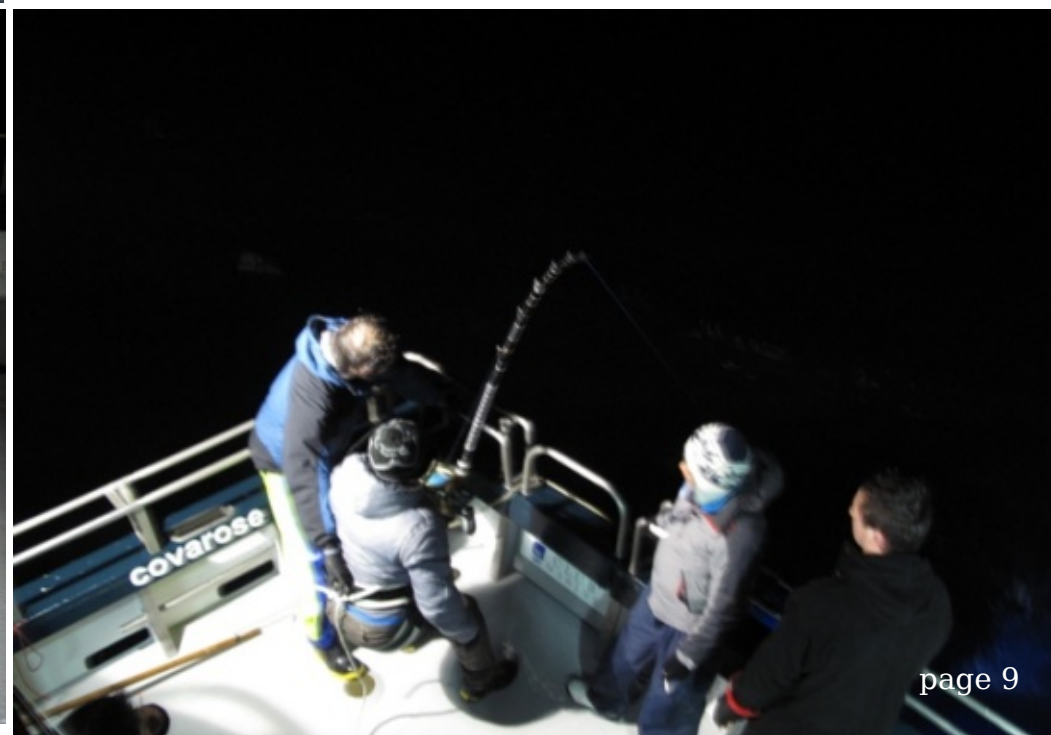


The boys have to wait three more hours before the next one was hooked and played for 2 1/2 hours before the tag was placed an fish released at 260kg , then again first bait was bit only to break off shortly after ,great first night boys were stoked with there first taste of these monsters.

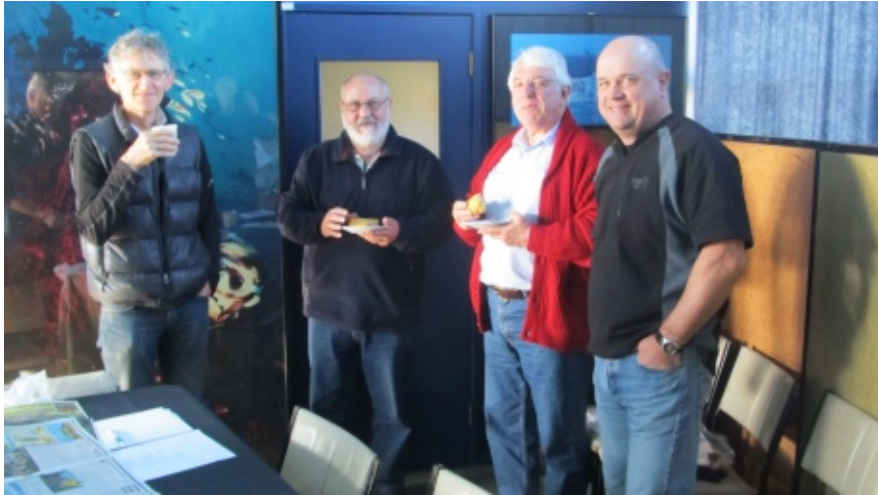


Night two we were all ready to rock and the wind came away from the ne at 25kts and by 9pm we had 35 -40kts reluctantly we had to turn away and run to the south with 4mtrs and 40kts of weather crashing over the transom in the middle of the night sure thankful of 35 ton and 56ft of cova rose beneath us not a place for the faint hearted.

Night three had the weather broken and us back on the fish, took half the night to get a bite only to break it off dam, an hour later we got hooked up again and sadly the fish died in the fight and came to the boat with no life so pulled aboard an taped out at 272kg. great start with us going 4 from 6 , the helm was turned for Westport and we took back a very tired croup of Chinese gents.



Update on the work of the Recreational Fishing Council



NZRFC from left to right: Ted Howard, Keith Ingram, Don Glass and Martyn Barlow

As a new boy on the block as regards to involvement with the NZRFC I can only give you my perspective. I was asked to take up the position of Secretary and the position was formalised at the recent AGM held at Nelson on the weekend of the 2nd and 3rd August.

I was also elected to the Board along with Geoff Rowling – President, Ted Howard – Vice President, Sheryl Hart- Vice President, George Zander – Board member and Duncan MacIver – Board

members. Continuing members of the Board are: Ross Gildon, Kevin Moratti, Mark Roden and Keith Ingram- Immediate Past President. Vivienne Ingram continues as Treasurer.

A number of NZRFC initiatives were reported on at the AGM.

FishinFuture

This group of 66 fishers representing a wide spectrum of our community around New Zealand met in Nelson in February 2013 and through a careful consensus process established eight common agreements. These can be accessed from the FishinFuture website: www.fishinfuturesearch.co.nz.

A steering group of 13 members, chaired by Don Boddie of Paekakariki, has met twice since February. To gain traction the group are addressing the issue of funding. The aim is to establish a self-funded independent body to represent all recreational fishers in New Zealand. This body will advocate the eight common agreements on a professional footing for the first time. In time (maybe 3 to 5 years) it is expected that as this group gains credibility the NZRFC will be able to step back. However, in the meantime, NZRFC has work to do and continues to advocate on behalf of all recreational fishers throughout New Zealand.

Issues being addressed

Snapper1 proposals have been receiving huge attention from the media and twice recently our President has appeared on Backbenches and Q&A programmes to advocate on behalf of the recreational fishers cause. If you missed the Q&A interview with Geoff Rowling you can access it at <http://tvnz.co.nz/q-and-a-news/snapper-quota-video-5535708>. It seems like political suicide to propose a reduction of snapper catch from 9 to 3 per person. Or is it just a red herring to divert attention away from the controversial GCSB bill. I personally can't believe they intend to proceed with the proposal. In response to the outcry they will probably offer the carrot of a reduction from 9 to 7 or similar to placate the seething masses or even more likely retract the proposal altogether. Never mind that commercial fishers continue to use wasteful fishing methods where juvenile fish are needlessly killed and by-catches of snapper are being dumped. Glen Simmonds from School of Business Studies University of Auckland has recently investigated fish dumping by commercial fishers and concluded that about 450 tonnes of juvenile snapper are killed each year in Snapper 1 alone while 33% of all inshore commercial fish catch are being dumped due to the avoidance of deemed value.

Board members have been making submissions on a wide range of other issues including proposed sand mining and its impact on the marine environment in Taranaki, proposed changes to commercial crayfish catch in East Coast and Otago, proposed changes to snapper catches in the top of the south, proposed opening of restricted Paua 5D to commercial catches, commercial exclusion zones for scalloping in Coromandel, set net bans, Chatham Island dredge oyster, deemed value, marine pollution and bio-security risks. There are other issues that NZRFC board members have been working on but this gives you an idea that these volunteers are doing their best to represent the interests of recreational fishers.

By the time you read this article Geoff Rowling will have visited Dunedin to participate in the cross sector engagement meeting related to the on-going paua issue. It is simply not acceptable for MPI to spend years working with commercial paua fishers and then only engage with us for a couple of weeks. We are working to get a way to ensure the good access to paua enjoyed in the south is continued. It is extremely difficult for NZRFC to advocate effectively when all the Board members are volunteers. Constantly we are responding to issues often initiated by the demands made by the professional lobbying of the commercial fishing sector. The MPI is driven by the demands from government to maximise the export earnings and so it is understandable that a lot of the proposals favour that goal.



Bruce Reid, Secretary NZRFC

However, as we all know the recreational fishers also generate a lot to the economy (see the survey results below) and when regulations affect us adversely it costs jobs also. The MPI don't subscribe to that perception of the economic impact of their regulation changes. The export economy is their predominant focus it seems.

Recreational Fishers survey

Recently the NZRFC commissioned a survey into recreational fishing by the School of Business Studies at the University of Auckland. The results have not yet been officially released but some key findings are: 26% of New Zealanders over 18 years of age participated in recreational fishing at least 3 times in the last summer season, 38% were female, 80% saw fishing as an important recreational activity, 75% thought the catch limits were about right, about 33% thought fishing quality was worse than 5 years ago, 70% would report their catches sometimes preferably on-line, 40% owned boats, 90% bought their fishing gear from local stores and 90% support recreational only fishing areas. From the data gathered it has been extrapolated that the capital value of recreational boats is \$8.2 Billion and the annual spend on fishing trips is about \$1.4 Billion. The survey covers a lot more aspects but from those given above you can appreciate that the work of the NZRFC is important. It does its best but frankly recreational fishers need professional advocacy and that is the reason for fishinfuture.

Membership of NZRFC

For the reasons already outlined please give serious consideration to signing up for club and or personal membership of the NZRFC. This organisation is the recognised advocacy agent for recreational fishers across the whole country. It needs your support. To join, the rates for an annual subscription are: Individuals \$25, Clubs (100 members or less) \$115, Clubs >100 members \$1.15 per member, Corporate \$230, Regional Organisations \$230 and National organisation \$575. Donations are also welcome. Pay direct to NZRFC at Westpac 03 0525 0256471 00 with your initial and surname as a reference or post to Treasurer of NZRFC, 4 Prince Regent Drive Halfmoon Bay, Manukau 2012. Please provide details such as address and e-mail address as well.

Dunedin Community Salmon Trust Inc – AGM

Thursday 19th September 2013, 5:30pm

Tautuku Fishing Club, Smaills Beach, Dunedin

Get together. AGM, presentations, refreshments & snacks.

All Welcome

Our Future – Dunedin “Salmon City” of New Zealand!

Moeraki Club Fishing Competition

Saturday 28th September 2013

Contact: Russell Moylan PH: 456 1162 russell_m@xtra.co.nz for details





Fishing Quotes:

"Give a man a fish and he has food for a day; teach him how to fish and you can get rid of him for the entire weekend."

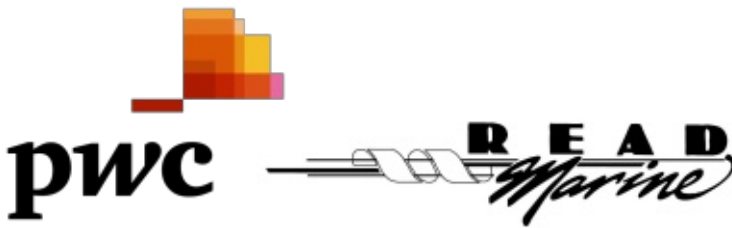
- Zenna Schaffer

"The charm of fishing is that it is the pursuit of what is elusive but attainable, a perpetual series of occasions for hope."

- John Buchan

"The two best times to fish is when it's rainin' and when it ain't."

- Patrick F. McManus



Contract Container Services Ltd

BUY • SELL • LEASE • REFURBISH
all types of containers

GREG EDWARDS

160 Ravensbourne Rd, Dunedin

Phone: 03 479 0976 Mobile: 0274 320 542

Email: contractcontainerservices@ihug.co.nz

Report to the Tautuku Fishing Club LURE Newsletter from Niall Watson, CEO, Otago Fish & Game Council, Dunedin.



Lower Clutha River Sports Fisheries Mitigation

The construction of the Roxburgh Dam in the 1950s cut off fish passage for a major run of Chinook salmon in the Clutha River. The historic run has been estimated in the tens of thousands and returning fish made their way upstream to spawn in lake tributaries including the Hunter and Matukituki Rivers. The runs quickly diminished once the dam was completed and its

operation from then until 2007 was characterised by a lack of conditions designed to address environmental impacts.

However the historic consents to operate the scheme expired in 2001 and by 2007 Contact Energy's new resource consents for its Clutha hydro scheme, issued under the RMA, finally became operative. Several consent conditions imposed related to the Lower Clutha River below Roxburgh Dam and aimed to mitigate the very significant impacts on sports fisheries and fish habitat. Four conditions related to management of river flows and covered minimum flows, rate of change in flows, a period of stable flows during salmon egg incubation in river bed gravels, and recreational flows for the opening of duck shooting. One related to sediment removal from the Lower Manuherikia River.

Finally one condition requires Contact to commission a sports fisheries mitigation programme to manage the sports fisheries in the lower Clutha from Roxburgh Dam to the sea so that:

(i) A self sustaining population of salmon with a target spawning run of approximately 5000 salmon is established, and

(ii) Sports fish habitat is generally enhanced.

In recognition of the adverse effects of the Hawea Dam, Clyde Dam and Roxburgh Dam operations on downstream passage of sports fish and sports fish habitat quality.

The sports fish mitigation programme is intended to be an exercise in adaptive management with Contact Energy and its scientific advisors working closely together with Otago Fish and Game in a working party approach. A number of different options have been considered for restoration of a salmon run of 5000 returning adult fish including:

Facilitating downstream fish passage for outmigrating salmon smolts from landlocked stocks in Wanaka, Wakatipu and Hawea.

Trapping and transferring returning adult salmon and moving them to waters upstream where spawning and juvenile rearing grounds are available.

Enhancing spawning grounds below Roxburgh Dam (including in the Pomahaka Catchment) by restoring or stabilizing flows in tributaries and the main stem; by enhancing spawning

Report to the Tautuku Fishing Club LURE Newsletter from Niall Watson, CEO, Otago Fish & Game Council, Dunedin.

gravels in tributary streams and grooming mainstem riverbed gravels; by stream fencing and planting and other works such as construction of artificial spawning channels. Planting eyed salmon ova or releasing salmon smolts into the lower Clutha including construction of a hatchery.

Early work focussed on evaluation of options for enhancement of salmon runs, monitoring of returning salmon stocks and harvest, attempts at general habitat enhancement, analysis of otoliths from both landlocked and returning sea run salmon to determine their life histories and relative contributions to returning fish stocks.

By 2009 the focus was quickly turning to smolt releases as the most cost-effective means of achieving salmon run enhancement. Salmon releases to date are shown in Table 1 below.

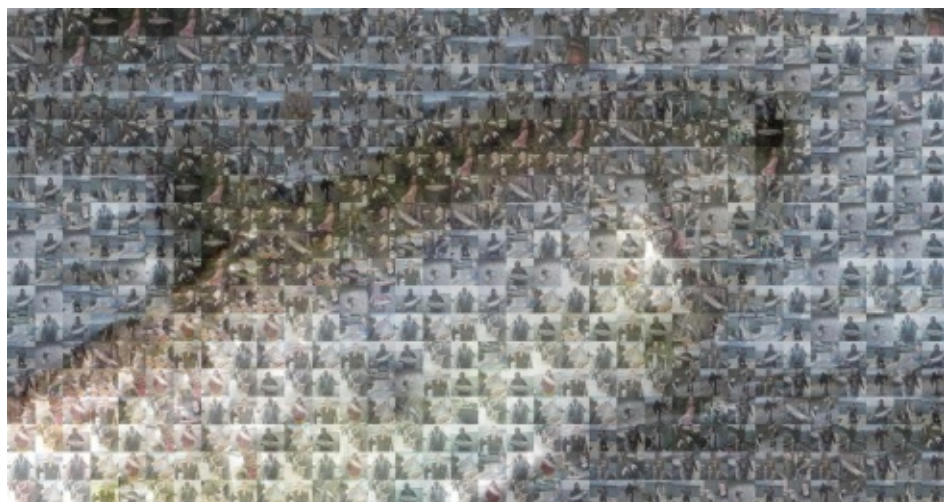
Table 1. Smolt releases into the Lower Clutha 2010 onwards

Year	Number Released	Number Fin Clipped
2010	30,000	30,000
2011	80,000	30,000
2012	110,000	30,000
2013	150,000	30,000

Fish and Game considers the number of salmon released needs to more than double from the 2013 release figures to enhance the residual run to the 5000 fish target. The residual run is thought to be well below 100 returning fish but lower Clutha salmon anglers are hoping to see the effect of the 2011 and 2012 releases in the next year or two.

Help Otago Fish and Game Monitor the Lower Clutha Salmon fishery!

If you fish for salmon in the Lower Clutha or Pomahaka Rivers we'd like to include you in our annual salmon harvest survey. Some of you are already involved but if you are not, contact Helen Keeling (h.keeling@fish-game.org.nz or 03 4779076) and register with us. We want to know about your salmon fishing and we'll give you the results of our annual survey, so you know how other lower clutha salmon anglers are doing.



dunedin

salmon
city

fish to beat

Winter Cup – Cate Bardwell – Blue Cod 2.505kg
THAT IS ALSO HEAVIEST BLUE COD

SCENIC
HOTELS

Heartland
HOTELS

Junior Blue Cod Cup – Jorja Hutton – 2.335kg

Jock Stewart – Grant Hutton .665kg

Ladies Trophy – Cate Bardwell – Blue Cod 2.505kg

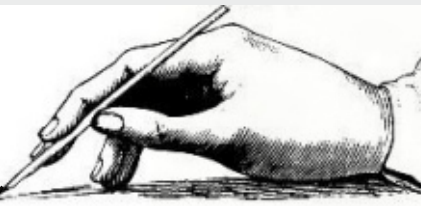
Junior Trophy – Jorja Hutton – Blue Cod 2.335kg

PROVISIONAL SKIPPERS POINTS NON GAME FISH

NATHAN PITCHER 3

GRANT HUTTON 3

Letters to the Editor



This is a damn good newsletter, I look forward to each copy.

Don Boddie.

Chair – Steering Committee – Our Fishing Future NZ

Great read this month with some very hot topics, well done.

Grant Ashton

Allan Millers Hunting & Fishing, Dunedin.

I say a very informative read.

Mike Brosnan

Bendigo Valley S & C Foundation

Graham Warman
photography

advertising
website
commercial
portrait
weddings

web: www.grahamwarman.co.nz | tel: 0274 418 027
email: photography@grahamwarman.co.nz



FUJITSU **HEAT PUMPS**
NEW ZEALAND'S FAVOURITE AIR™

Fujitsu are proud sponsors of the
Dunedin Community Salmon Trust, Otago
Salmon Anglers, South Canterbury Salmon
Anglers and Tautuku Fishing Club.